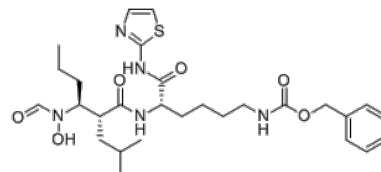


**Product Name** : GW280264X  
**Cat. No.** : PC-73156  
**CAS No.** : 866924-39-2  
**Molecular Formula** : C<sub>28</sub>H<sub>41</sub>N<sub>5</sub>O<sub>6</sub>S  
**Molecular Weight** : 575.72  
**Target** : Matrix Metalloproteinase (MMP)  
**Solubility** :



## Biological Activity

GW280264X is a potent, dual ADAM10/TACE (ADAM17) metalloproteinases inhibitor with IC<sub>50</sub> of 8.0 nM and 11.5 nM, respectively.

GW280264X is an effective inhibitor of the constitutive and the PMA-inducible CX3CL1 cleavage in CX3CL1-expressing ECV-304 cells.

GW280264X blocked IL-6-induced proliferation and ERK1/2 phosphorylation with same potency as GM6001 in non-transformed prostate epithelial cells.

GW280264X enhances platinum efficiency in ovarian cancer.

## References

Budagian V, et al. J Biol Chem. 2004 Sep 24;279(39):40368-75.

Hundhausen C, et al. Blood. 2003 Aug 15;102(4):1186-95.

Rabie T, et al. J Biol Chem. 2005 Apr 15;280(15):14462-8.

Bourd-Boittin K, et al. J Cell Mol Med. 2009 Aug;13(8A):1526-35.

**Caution: Product has not been fully validated for medical applications. Lab Use Only!**

E-mail: tech@probechem.com